

# Sweet Treats Tote

This makes a bag that's 12" tall, 10" wide, and 2" deep.



**Cut two pieces of fabric – one for exterior and one for lining.**

25" wide x 13" high

Cut 1 piece of webbing 26" long for strap



Use 1/2" seams throughout unless otherwise indicated.

## Exterior and Lining

Both exterior and lining are made the same.

Put right sides together and stitch the side and bottom. *I usually stitch these seams twice*



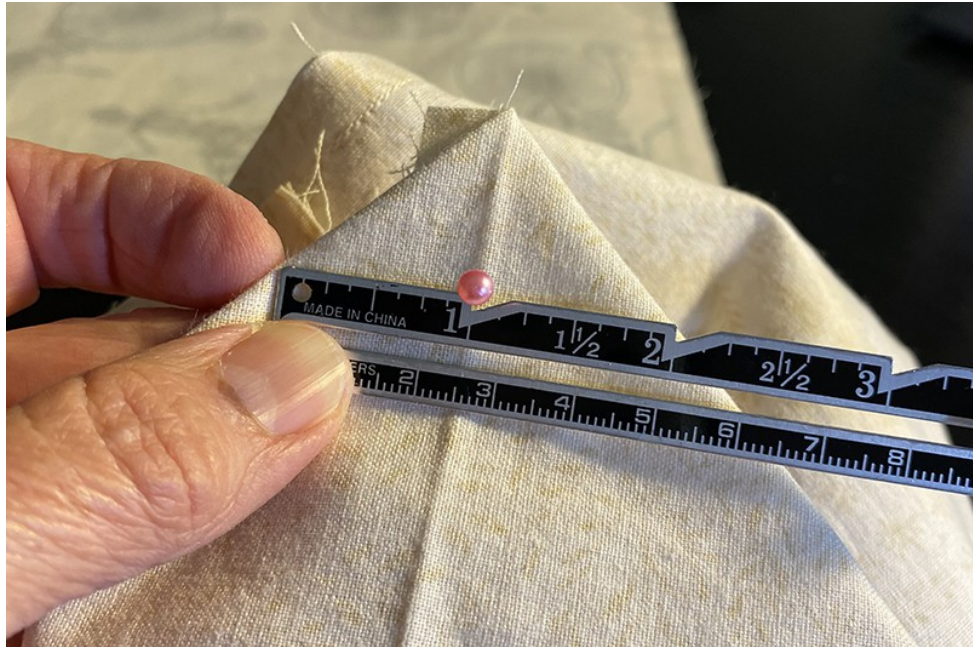
Box the corner at 2"

*When I'm boxing a corner on a folded side rather than a seam, I press the fold so I can see it really well.*

Pull the corner apart and line up the seam or fold with seam.



Measure down 1" and mark 2" across. Draw a line.



Stitch along that line. Then trim the corner.

I usually do an overcast or zigzag stitch to reinforce the corner after trimming.



Attach strap on the right side of the exterior.



One side goes on the seam. The other goes on the fold. Make sure the handle is not twisted. Stitch 1/4" from top edge.

### **Sewing Lining and Exterior together**

Put the lining and exterior bag right sides together. The handle is tucked inside.



Stitch the top edge, 1/2" from edge. Leaving a 4" opening for turning right side out.  
Pull exterior out through the opening.



Tuck the lining in. Press.



Stitch close to the top edge and again 3/8" from top edge making sure to stitch the opening closed.

**Done!**